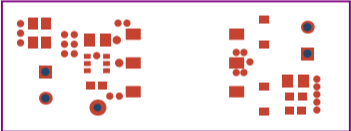
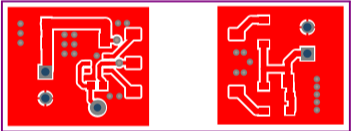


COMPONENTS MARKED 'DNP' SHOULD NOT BE POPULATED.
ASSEMBLY VARIANT: [No Variations]

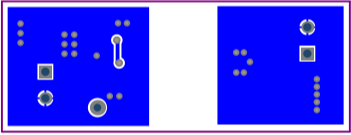
ACB NETWORK POWERPAD TOP SIDE	BOARD #: PMP30911 3U8	REV: A	SUN REV: Not in version control
LAYER NAME = M1 Board Outline	TID #: .TID		
PLOT NAME = Assembly	GENERATED : 5/10/2022 4:42:30 PM	TEXAS INSTRUMENTS	



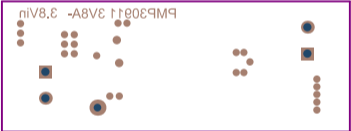
ALL ARTWORK VIEWED FROM TOP SIDE	BOARD #: PMP30911 3U8	REV: A	SUN REV: Not in version control
LAYER NAME = Top Solder	TID #: .TID		
PLOT NAME = Top Solder Mask	GENERATED : 5/10/2022 4:42:30 PM		TEXAS INSTRUMENTS



ALL ARTWORK VIEWED FROM TOP SIDE	BOARD #: PMP30911 3U8	REV: A	SUN REV: Not in version control
LAYER NAME = Top Layer	TID #: .TID		
PLOT NAME = Top Layer	GENERATED : 5/10/2022	4:42:30 PM	TEXAS INSTRUMENTS



ALL ARTWORK VIEWED FROM TOP SIDE	BOARD #: PMP30911 3U8	REV: A	SUN REV: Not in version control
LAYER NAME = Bottom Layer	TID #: .TID		
PLOT NAME = Bottom Layer	GENERATED : 5/10/2022	4:42:31 PM	TEXAS INSTRUMENTS

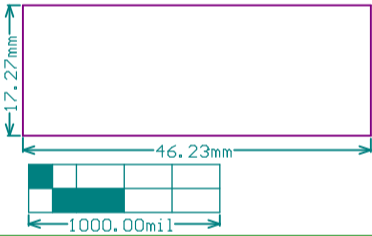


ALL ARTWORK VIEWED FROM TOP SIDE	BOARD #: PMP30911 3U8	REV: A	SUN REV: Not in version control
LAYER NAME = Bottom Solder	TID #: .TID		
PLOT NAME = Bottom Solder Mask	GENERATED : 5/10/2022 4:42:31 PM		TEXAS INSTRUMENTS



Symbol	Quantity	Finished Hole Size	Plated	Hole Type	Drill Layer Pair	Hole Tolerance
⚙	24	16,00mil (0,406mm)	PTH	Round	Top Layer - Bottom Layer	
⊠	2	20,00mil (0,508mm)	PTH	Round	Top Layer - Bottom Layer	
▽	1	40,00mil (1,016mm)	PTH	Round	Top Layer - Bottom Layer	
□	4	43,31mil (1,100mm)	PTH	Round	Top Layer - Bottom Layer	
	31 Total					

ALL ARTWORK VIEWED FROM TOP SIDE	BOARD #: PMP30911 3U8	REV: A	SUN REV: Not in version control
LAYER NAME = Drill Drawing	TID #: .TID		
PLOT NAME = Drill Drawing	GENERATED : 5/10/2022 4:42:32 PM		TEXAS INSTRUMENTS



ALL ARTWORK VIEWED FROM TOP SIDE	BOARD #:	PMP30911 3U8	REV:	A	SUN REV:	Not in version control
LAYER NAME = M2 Board Dimensions	TID #:	.TID				
PLOT NAME = Board Dimensions	GENERATED	: 5/10/2022	4:42:32 PM	TEXAS INSTRUMENTS		